

# *The Beacon*

*Sunrise Presbyterian Church*

*March 2019 Newsletter*



**Wednesday, March 6**

**5:30 p.m. Soup and Soul**

**6:30 p.m. Ash Wednesday Service**

**Sunday, March 10**

**Daylight Savings Time Begins; Single Service at 10:00 a.m. with fellowship lunch following**

**Sunday, April 14**

**Palm/Passion Sunday Services at 9 and 11 a.m.**

**Easter Egg Hunt at 10:00 a.m.**

**Children's Processional and Singing at 11 a.m.**

**Thursday, April 18**

**6:00 p.m. Maundy Thursday Seder; Fellowship Hall**

**Friday, April 19**

**7:30 p.m. Good Friday Service of Shadows (sunset is at 7:52 p.m.)**

**Sunday, April 21**

**6:30 a.m. Easter Sunrise Service on the beach**

**9:00 a.m. Celebration of the Resurrection**

**11:00 a.m. Celebration of the Resurrection**

*O God, I am seeking  
ways to be  
less encumbered;  
ways to  
simplify my life;  
ways to build  
spaces and silences  
into a life full  
of busyness  
and noise.*

*Teach me to find that  
quiet center of self  
that you have  
hidden within me,  
a resting in  
your presence. Amen.*

Jamie L. Watkins

---

### ***Lent 2019***

Why do some Christians *give up* something for Lent? Historically, Presbyterians have not practiced this seasonal tradition. The purpose of *giving up* something during Lent is about more than simply denying oneself a favorite food or activity. It is about *reorienting* our lives towards God.

You may choose to *give up* something, or you may **add** something. In either case, the purpose is the same – to pause and remember God in the middle of all the busyness of life. Recently, I came across the prayer above. I invite you to consider adding it to your prayer life during Lent.

This Lent at Sunrise, there will be a number of special services. The first is Ash Wednesday. You will be invited into the season of Lent with our traditional service of scripture readings, Taize songs, the receiving of ashes and communion. As always, we have soup and grilled cheese sandwiches before the service. I encourage you to take advantage of this special way of beginning Lent.

In God's grace,



## What's in a Name?

What's in a name? When the campus ministry to the College of Charleston and the Citadel re-started 8 years ago, we had to re-evaluate everything. Why did the previous campus ministry -- which had been around for decades -- eventually struggle, shrink, and fail?

One of the many reasons we discovered was the name: "Presbyterian Students Association." To be sure, it was a mouthful to say, and as an acronym of "P.S.A." it brought to mind "Public Service Announcement." Yet more than that, many students saw the word "Presbyterian," and instinctively concluded that our Christian community was not for them. After all, if they weren't Presbyterian themselves, then perhaps they would not be welcome? Maybe we were just a club for the secret society of Presbyterians?

So we dropped "Presbyterian" from our branding and embraced "Journey" as our campus ministry name. At first, some were understandably worried that we might lose our Presbyterian identity. Yet, our name change actually allowed us to become more Presbyterian. Instead of leading with Presbyterian and then trying to make non-Presbyterians feel like they belonged in spite of themselves, we were able to lead with the gospel of Jesus Christ and teach students how we worshiped Christ through a Presbyterian understanding.

The result? Journey became one of the largest Presbyterian campus ministries in the nation. To this day, at our College of Charleston campus, a whopping 75% - 80% of students in our campus ministry come from a background that is not Presbyterian. Through the work of the Holy Spirit, we're not only making new Christians, we're making new Presbyterians too.

While changing the name was not a magical silver bullet, I don't think our growth could have happened without it either. This is why I'm so encouraged that this church is taking the bold step in leading with the name "Sunrise Church" as a way to be more inclusive and reach more people with the gospel. I am convinced that this kind of faithfulness will yield fruit in our ministry for years to come. ~ Colin



### Planning for the New Dawn Service Has Begun

Beginning in February, a team of volunteers from the congregation and a group of young adults that have previously worked with our Director of New Dawn Ministries came together to envision what a sustainable and growing contemporary worship service could look like. They have been meeting every Wednesday to work out every detail.

To date, they have developed three core values for the New Dawn Ministry, "Rooted," "Empowering," and "Fellowship."

Additionally, they've identified three priorities for the worship service: 1) Accessible songs 2) Interactive elements and 3) Topical messages.

They've also designated the primary instrumentation they'll be looking for: Guitar, Piano, Strings, and light percussion. All the while, they've been doing interviews with potential worship music leaders.

This group is getting it done! Keep them in their prayers. The new 10 am service is set to launch Sunday, April 28th, the first Sunday after Easter. ~ Colin

\$25 for first child, \$20 for second, and \$15 for third. Payment reserves your spot, please send to Sunrise Presbyterian Church, 3222 Middle St, Sullivan's Island, SC 29482 or you may drop it at the church office



## Dear Parents,

Send your kids on an impacting island adventure!

At Shipwrecked VBS, kids discover how Jesus rescues us through life's storms. Shipwrecked is filled with incredible Bible-learning experiences kids see, hear, touch, and even taste! Sciency-Fun experiments, team-building games, cool Bible songs, and tasty treats are just a few of the standout activities that help faith flow into real life. (Since everything is hands-on, kids might get a little messy. Be sure to send them in play clothes and safe shoes.) Plus, we'll help kids discover how to see evidence of God in everyday life—something we call God Sightings. Get ready to hear that phrase a lot!

This year we have an extra special guest planned...Irene Rose. Irene is a successful singer/songwriter and runs her own children's entertainment company. She can't wait to teach your children in a fun, interactive, and musical way!

Parents, grandparents, and friends are invited to join us at Sail Away Sendoff each day at 11:45 am, a daily exploration of our Jesus' rescue! So mark these dates on your calendar: June 17th - June 21st. The fun starts at 9:00 am and will end at 12:00 pm. Call this number (843) 883-3888 or visit [www.vbspro.events/p/mysunrise.com](http://www.vbspro.events/p/mysunrise.com) to register your children for this life-changing adventure!

Sincerely,  
Your Shipwrecked - Rescued by Jesus Team

Featuring Irene Rose - professional  
singer/songwriter in Nashville and  
children's entertainer





**VBS Registration is available for kids and volunteers online at:**

**[www.vbspro.events/p/mysunrise.com](http://www.vbspro.events/p/mysunrise.com)**

**Registration and Volunteer forms are also available in the Narthex**

**VBS can't be successful without the help of Volunteers! You are the heart of the program! We are in need of the following volunteers for VBS this summer:**

**Crew Leaders for Elementary and Preschoolers (can be teenagers)**

Crew Leaders don't have to prepare anything, they just come each day, guide their Crew members through activities, help facilitate discussions, and generally join in the VBS fun.

**Castaway Sing & Play and Sail Away Sendoff helpers**

This year successful singer/songwriter Irene Rose will be kick starting our Castaway Sing & Play as well as Sail Away Sendoff but we still need others to participate in the opening activities

**KidVid Cinema Leader**

Plays a 5 minute KidVid Story: Rescued by Jesus DVD during sessions each day. Use the daily Bible Point often as you guide Crews in thought-provoking experiences and heart-touching discussions

**Imagination Station Leader**

Use the daily Bible Point often as you lead sessions of Imagination Station every day, and help kids connect the fun experiments to Bible truths

**Tropical Treats Leader**

Set up the snack preparation area and guide kids as a different group of Crews makes the snacks each day - yes, they really can!

**Ship Rec Games Leader**

Lead Crews in the fun at sessions of Ship Rec Games each day. Also helps the Spotlight VBS Leader with a cool photo shoot during one games session each day as kids star in a VBS slideshow that everyone will watch at Sail Away Sendoff

**Bible Discovery Leader**

Use the Bible Point often as you lead children through incredible and interactive learning activities that make the Bible stories come alive in sessions of Bible Discovery each day.

**Spotlight VBS Leader**

Meet Crews at the 1st session of Ship Rec Games each day to take pictures of kids, according to directions in your script, then use your skills to create a super-cool photo presentation using the special downloadable Spotlight VBS

## "Bach Sunday" - March 17

Of all the great composers in the history of Western music - Johann Sebastian Bach is by far the most spiritually focused. He lived in Germany after the Protestant reformation and Martin Luther. This allowed him to compose worship pieces for instruments and not just voices. He reveled in transforming Protestant hymnody into complex cantatas and "chorale preludes" for organ (chorale is another name for "hymn").

Bach was devoted to studying theology as it informed and shaped his approach to musical composition. On the shelves of his domestic bookcase were sacred texts such as the "3 volume 1681 edition of the Lutheran Bible, 2 editions of Martin Luther's complete works, and several copies of major works by the reformer -for example, his commentary on the Psalms." (pg. 334 The Learned Musician by Christoph Wolff)

Bach's handwriting is seen throughout these books underlining sections and commenting on certain passages.

Outside of church, Bach was a devoted husband, father, and music teacher. Many, if not most, of his keyboard compositions were composed as teaching pieces for his children and students. Perhaps the most ambitious teaching composition was the 4 volume work entitled "Clavier-Ubung" - *Clavier* means "keyboard" and *ubung* means "exercise".

I will play the first composition from volume 1 of the Clavier-Ubung - the Partita no.1 BWV 825 - which has 7 movements:

1. prelude
2. allemande
3. courante
4. sarabande
5. menuet 1
6. menuet 2
7. gigue



(BWV is the system that organizes Bach's compositions and stands for *Bach-Werke-Verzeichnis* which translates as Bach-works-catalogue)



**Helpful Reminder!**  
March 10th  
Daylight Savings  
Time Begins!  
Don't forget to set  
your clocks ahead  
one hour.



This photo was found in the choir room and is locket size. Please contact the church office if it is yours. Thank You!

*Love was in the air this Valentines Day at the Valentine's Day Breakfast hosted by the Men's Breakfast Group*



*A special Thank You to Jerry Dillon's Men's Breakfast Group for hosting this event!*



## **Thursday Midday Lenten Services**

You are invited to join the Presbyterian Churches East of the Cooper for *Midday Lenten Services*. At noon on the following Thursdays, there will be a 30-minute worship service hosted by these churches. A light lunch will be available after each service.

March 14 – Mt. Pleasant Presbyterian - Communion service

March 21 – Sunrise Presbyterian - Communion Service

March 28 - Mt. Pleasant Presbyterian - Communion Service

April 4 – Palmetto Presbyterian - Communion Service

April 11 - Mt. Pleasant Presbyterian - Communion Service



## STEPHEN MINISTRY

### **Grief is a Journey with Different Possible Destinations**

*When someone experiences a major loss, he or she begins a journey. It is impossible to refuse the journey, but it can lead to very different destinations. Like any crisis, grief can be a journey toward greater wholeness or greater brokenness.*

#### **Larry's Story**

Wanda would putter around the house while Larry spent time with his woodworking projects. He usually made wooden toys like trucks or fire engines. Wanda would bring him some lemonade in the afternoon and they would talk about their children and their grandchildren. Larry was in his workshop in the garage when he heard Wanda call out.

When Larry heard Wanda's cry, he hurried into the house and saw Wanda lying on the kitchen floor, her right hand grasping her upper arm. He felt her neck and couldn't find a pulse. The funeral was four days later. At the funeral Larry kept a stiff upper lip as he had been taught to do. Finally when everyone was gone, Larry went home, changed into his work clothes and went out to the workshop. Larry couldn't remember what he had been working on, so he started a new toy – a rocket ship. He was turning a piece of wood on the lathe and started feeling hot and thirsty. "I wonder when Wanda will be bringing that lemonade," he thought. Suddenly Larry felt a jolt go through his body. He began to sob uncontrollably as the lathe continued to spin.

#### **Ending 1**

A year later Larry sat in his easy chair. His clothes hung on him. He stared at the TV dinner but didn't eat any of it. He heard the phone ring but didn't bother answer it. He heard the message, "Dad...Listen, we're going to come up there on Saturday to see how you're doing. Dad...you've got to start taking care of yourself."

Larry got up and walked out to the garage. He sat on the stool and stared at the piece of the rocket ship that was still attached to the lathe. He called out, "Wanda, how about some of that lemonade." He sat on the stool late into the night. Finally he walked back into the living room and fell asleep in his chair.

Two years after Wanda died, Larry sat in a wheelchair at a nursing home. He slowly rocked back and forth. The restraint kept him from falling out of the chair.

#### **Ending 2**

A year later Larry was working in his workshop making a rocket ship for his grandson, Tim. He noticed he was thirsty and almost called out to Wanda to bring him some lemonade. When he caught himself, he started to cry again. "This hurts so much. I never thought anything could hurt like this," he thought. So Larry called his Stephen Minister. "Jim, I was just thinking about Wanda," Larry said. "It seems as if I miss her more than before. This isn't getting any better, it's getting worse." "It sounds as if you're feeling down, tell me more about how you are feeling," Jim said. Larry and Jim continued their conversation for an hour and talked about Larry's feelings of loneliness and grief.

Two years after Wanda died, Larry was at a craft fair with his grandson Tim. They were selling wooden toys that Larry and Tim had made together.

#### ***What made the difference between Larry's first and second ending of Larry's journey?***

*Larry shared his grief journey with a Stephen Minister. The Stephen Minister listened as Larry tried to make sense out of his/her loss, and encouraged Larry to find ways to rebuild. Study after study supports the premise that social support is one of the greatest predictors of resilience to loss.*

*Grieving is natural, and not expressing grief is unnatural and unhealthy. People who do not express their grief, become vulnerable to even more problems. While not every grieving person will have an experience like Larry's or need Stephen Ministry, for some a Stephen Minister's care helps them move toward greater wholeness. If you are experiencing grief, and you don't have someone to talk to, consider a Stephen Minister.*

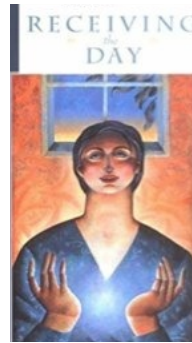




**Calling all 9th Graders to Graduating Seniors to join us at the Montreat Conference** which will take place from June 9th-16th! Please contact Andy at [andy@hilibofas.com](mailto:andy@hilibofas.com) or (843)814-0885 for more information.

The 2019 Montreat Youth Conference will equip and empower youth to make tangible changes within themselves and the greater community by hearing their peers' voices and using their own. We invite youth to be their authentic selves, to form deep, spiritual, and intentional relationships with God, themselves, and others, in order to grant assurance of wholeness. We will provide an affirming atmosphere to embrace the unknown and ask questions that lead to exploration as a means of faith development.

Montreat Youth Conference (MYC) is designed for high school students, entering freshmen through graduated seniors, and for their group leaders. There are four main parts of every day at MYC: keynote, small groups, worship, and recreation.



**The Miriam-Naomi Circle** will meet at 10:00 a.m., March 12th in the Sunrise Library. Rev. Vance Polley will lead us in Lesson 5 of our study, "Receiving the Day" by Dorothy C. Bass. Copies of the study guide will be available at our meeting. We also have copies of our up-to-date directory for those who do not have one. We welcome new members to our Circle. Fellowship continues after the study with lunch at a convenient location for those who can do so.

### Communion for All

Communion is served during worship on the first Sunday of each month. If you or someone in your care is unable to attend worship, but would like to receive communion, contact Ida Havelka at [ihavelka@comcast.net](mailto:ihavelka@comcast.net) or 843-886-0963.

Arrangements will be made with Vance and an Elder to come to you and serve communion.



Please join us for the Women's Evening Bible Study as we continue to "get back to basics" on March 19th at 5:30 pm in the choir room. The focus of this Bible Study is focusing on HOW to study the Bible as a whole. Contact Reece ([ReecehSmith@yahoo.com](mailto:ReecehSmith@yahoo.com)) if you'd like more info.



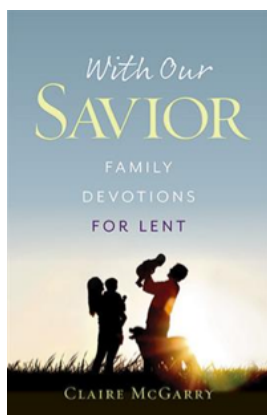
Sunrise serves a midday meal *the second Tuesday of each month at TriCounty Family Ministries*. We will only set up and serve. NO cooking is involved. We need six or seven volunteers from 9 am-12:30 pm. If you would like to volunteer, contact John Myatt at [843 225-3720](tel:8432253720). We'd love to have you join us on March 12th!

## A Little History on Lent....

The season of Lent is a time of prayer, fasting and self-examination in preparation for the celebration of the resurrection of the Lord at Easter. It is a period of 40 days — like the flood of Genesis, Moses' sojourn at Mount Sinai, Elijah's journey to Mount Horeb, Jonah's call to Ninevah to repent and Jesus' time of testing in the wilderness. (The Sundays in Lent are not counted in this reckoning of the time between Ash Wednesday and Easter, as every Lord's Day is a celebration of the resurrection of Jesus Christ.)

In the early church, Lent was a time of preparation for the celebration of baptism at the Easter Vigil. In many communities of faith it remains a time to equip and nurture candidates for baptism and confirmation and to reflect deeply on the theme of baptismal discipleship.

Join us for Soup & Soul at 5:30 pm March 6th, sign up to bring your favorite soup on the signup sheet in the Fellowship Hall. The Ash Wednesday Service, at 6:30 pm. will follow.



Celebrate your faith together as a family this Lent as you go through the season "With Our Savior!" Every day of Lent is an opportunity to bring yourself and your family closer to the joy of Easter. Scripture, reflection, prayer and activities are presented here, encouraging you and your family members to embrace the beautiful Lenten traditions that have been passed down to us for generations. Be sure to pick up a copy in the Narthex to share with your family.



**Thank you for your generous contributions to the Remembrance Garden...**

~

*~ Gary Hawkins in memory of Zola Mae Hawkins (my mother)  
~ Roberta and Dick Blanchard in memory of Grace and Harriette (our mothers)*

If you'd like to help keep the garden beautiful, please complete the donation form located in the narthex and note Remembrance Garden on the check memo line. Contributions given in memory of or in honor of someone will be included in the Beacon Dedication binder.



Sunrise Church enjoyed Southern Transfer Quartet who sang at the 11AM service on February 24th. Members are Richard Harris, tenor, Bobby Veitch, lead, Clayton Echan, bass, and Brantly Cox, baritone.

## SOUPER BOWL OF CARING SUCCESS!

Thank you for your generous support again this year for Souper Bowl of Caring! The monetary donations to **CofC Food Pantry and the Stone Soup Collective in Charleston** were \$660.00 which is up from previous years; \$424.00 in 2018 and \$399.00 in 2017!!! 126 food items were also collected and distributed. Way to go Sunrise in serving our local community!!!

## Welcome New Sunrise Members!!

- Alex & Anna Chalmers and their children Ryan, Darby, and Walker
- David Brown
- Carol Ann Liner
- Ennis & Francie James and their children Tanner and Sawyer

## KID MISSION!

**ON BEHALF OF THE CHILDREN OF SUNRISE, THANK YOU SO MUCH FOR YOUR GENEROUS DONATIONS OF ITEMS FOR THE HYGIENE KITS! THESE WILL GO TO PEOPLE ALL OVER THE US AND THE WORLD WHO ARE IN NEED AS THE RESULT OF DISASTERS. WE WILL DEDICATE THE KITS AT THE MARCH 10TH SERVICE.**





**Church Office Hours:**  
8:00 a.m. – 12:00 p.m.  
Monday through Friday  
Phone: (843) 883-3888  
[www.sunrisepresbyterianchurch.org](http://www.sunrisepresbyterianchurch.org)

## Sunrise Staff

**The Rev. Dr. Vance E. Polley**  
Pastor  
VancePolley@me.com

**Colin Kerr, M. Div.**  
New Dawn Ministries  
citizen.kerr@gmail.com

**Hannah Webster**  
Church Administrator  
sunrisepresbyterian3222@gmail.com

**Bob Ingram**  
Finance Administrator  
homeri1952@gmail.com

**Matthew Parker**  
Director of Music Ministries  
mparker76@hotmail.com

**Reece Smith**  
Parish Elder  
ReeceSmith@yahoo.com

**Andy Whitfield**  
Youth Director  
andy@hilibofas.com



Sunrise Presbyterian Church  
3222 Middle Street  
PO Box 517  
Sullivan's Island, SC 29482